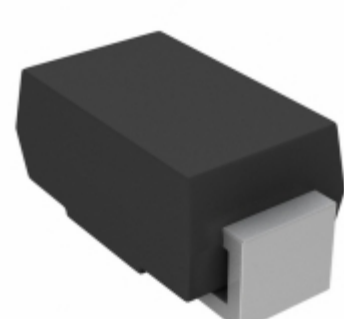


## SMA5J16A-E3/5A



**Part Number:** [SMA5J16A-E3/5A](#)  
**Manufacturer:** [Electro-Films \(EFI\) / Vishay](#)  
**Description:** TVS DIODE 16V 26V DO214AC  
**Data sheet:** [SMA5J5.0-40\(C\)A](#)

**RoHS Status:** Lead free / RoHS Compliant  
**Ship From:** Hong Kong  
**Shipment Way:** DHL/Fedex/TNT/UPS/EMS

Images are for reference only.  
 See Product Specifications for product details.  
 Buy SMA5J16A-E3/5A with confidence from  
 Component-World.HK, 1 Year Warranty

[Request For Quotation](#)

### PRODUCT PARAMETER

<b>Part Number</b>	SMA5J16A-E3/5A	<b>Manufacturer</b>	<a href="#">Electro-Films (EFI) / Vishay</a>
<b>Description</b>	TVS DIODE 16V 26V DO214AC	<b>Lead Free Status / RoHS Status</b>	Lead free / RoHS Compliant
<b>Quantity Available</b>	454289 pcs	<b>Data sheet</b>	<a href="#">SMA5J5.0-40(C)A</a>
<b>Category</b>	<a href="#">Circuit Protection</a>	<b>Voltage - Reverse Standoff (Typ)</b>	16V
<b>Voltage - Clamping (Max) @ 1pp</b>	26V	<b>Voltage - Breakdown (Min)</b>	17.8V
<b>Unidirectional Channels</b>	1	<b>Type</b>	Zener
<b>Supplier Device Package</b>	DO-214AC (SMA)	<b>Series</b>	TransZorb®
<b>Power Line Protection</b>	No	<b>Power - Peak Pulse</b>	500W
<b>Packaging</b>	Tape & Reel (TR)	<b>Package / Case</b>	DO-214AC, SMA
<b>Operating Temperature</b>	-55°C ~ 150°C (TJ)	<b>Mounting Type</b>	Surface Mount
<b>Moisture Sensitivity Level (MSL)</b>	1 (Unlimited)	<b>Manufacturer Standard Lead Time</b>	46 Weeks
<b>Lead Free Status / RoHS Status</b>	Lead free / RoHS Compliant	<b>Current - Peak Pulse (10/1000µs)</b>	19.2A
<b>Capacitance @ Frequency</b>	-	<b>Base Part Number</b>	SMA5J
<b>Applications</b>	General Purpose		

Component-World.com is a Reliable Stocking Distributor of Electronic Components. We specialize in all Electro-Films (EFI) / Vishay series electronic components. We have 454289 pieces of Electro-Films (EFI) / Vishay SMA5J16A-E3/5A in stock available now. Request a quote from electronics components distributor at Component-World.com, our sales team will contact you within 24 hours.  
 RFQ Email: [info@Components-World.com](mailto:info@Components-World.com)

### RELATED PRODUCTS

	<b>Part#:</b> <a href="#">SMA5J15CA-E3/5A</a> <b>Description:</b> TVS DIODE 15V 24.4V DO214AC	<b>Manufacturers:</b> <a href="#">Electro-Films (EFI) / Vishay</a>	<a href="#">RFQ</a>
	<b>Part#:</b> <a href="#">SMA5J16A-E3/61</a> <b>Description:</b> TVS DIODE 16V 26V DO214AC	<b>Manufacturers:</b> <a href="#">Electro-Films (EFI) / Vishay</a>	<a href="#">RFQ</a>
	<b>Part#:</b> <a href="#">SMA5J16CHE3/5A</a> <b>Description:</b> TVS DIODE 16V 28.8V DO214AC	<b>Manufacturers:</b> <a href="#">Electro-Films (EFI) / Vishay</a>	<a href="#">RFQ</a>
	<b>Part#:</b> <a href="#">SMA5J15HE3/5A</a> <b>Description:</b> TVS DIODE 15V 26.9V DO214AC	<b>Manufacturers:</b> <a href="#">Electro-Films (EFI) / Vishay</a>	<a href="#">RFQ</a>
	<b>Part#:</b> <a href="#">SMA5J16CA-E3/61</a> <b>Description:</b> TVS DIODE 16V 26V DO214AC	<b>Manufacturers:</b> <a href="#">Electro-Films (EFI) / Vishay</a>	<a href="#">RFQ</a>
	<b>Part#:</b> <a href="#">SMA5J16CAHE3/5A</a> <b>Description:</b> TVS DIODE 16V 26V DO214AC	<b>Manufacturers:</b> <a href="#">Electro-Films (EFI) / Vishay</a>	<a href="#">RFQ</a>
	<b>Part#:</b> <a href="#">SMA5J16AHE3/5A</a> <b>Description:</b> TVS DIODE 16V 26V DO214AC	<b>Manufacturers:</b> <a href="#">Electro-Films (EFI) / Vishay</a>	<a href="#">RFQ</a>
	<b>Part#:</b> <a href="#">SMA5J16C-E3/5A</a> <b>Description:</b> TVS DIODE 16V 28.8V DO214AC	<b>Manufacturers:</b> <a href="#">Electro-Films (EFI) / Vishay</a>	<a href="#">RFQ</a>
	<b>Part#:</b> <a href="#">SMA5J16CA-E3/5A</a> <b>Description:</b> TVS DIODE 16V 26V DO214AC	<b>Manufacturers:</b> <a href="#">Electro-Films (EFI) / Vishay</a>	<a href="#">RFQ</a>
	<b>Part#:</b> <a href="#">SMA5J15CHE3/5A</a> <b>Description:</b> TVS DIODE 15V 26.9V DO214AC	<b>Manufacturers:</b> <a href="#">Electro-Films (EFI) / Vishay</a>	<a href="#">RFQ</a>
	<b>Part#:</b> <a href="#">SMA5J15CAHE3/61</a> <b>Description:</b> TVS DIODE 15V 24.4V DO214AC	<b>Manufacturers:</b> <a href="#">Electro-Films (EFI) / Vishay</a>	<a href="#">RFQ</a>
	<b>Part#:</b> <a href="#">SMA5J15CA-E3/61</a> <b>Description:</b> TVS DIODE 15V 24.4V DO214AC	<b>Manufacturers:</b> <a href="#">Electro-Films (EFI) / Vishay</a>	<a href="#">RFQ</a>
	<b>Part#:</b> <a href="#">SMA5J16AHE3/61</a> <b>Description:</b> TVS DIODE 16V 26V DO214AC	<b>Manufacturers:</b> <a href="#">Electro-Films (EFI) / Vishay</a>	<a href="#">RFQ</a>
	<b>Part#:</b> <a href="#">SMA5J16-E3/5A</a> <b>Description:</b> TVS DIODE 16V 28.8V DO214AC	<b>Manufacturers:</b> <a href="#">Electro-Films (EFI) / Vishay</a>	<a href="#">RFQ</a>
	<b>Part#:</b> <a href="#">SMA5J15CAHE3/5A</a> <b>Description:</b> TVS DIODE 15V 24.4V DO214AC	<b>Manufacturers:</b> <a href="#">Electro-Films (EFI) / Vishay</a>	<a href="#">RFQ</a>
	<b>Part#:</b> <a href="#">SMA5J15HE3/61</a> <b>Description:</b> TVS DIODE 15V 26.9V DO214AC	<b>Manufacturers:</b> <a href="#">Electro-Films (EFI) / Vishay</a>	<a href="#">RFQ</a>
	<b>Part#:</b> <a href="#">SMA5J16CAHE3/61</a> <b>Description:</b> TVS DIODE 16V 26V DO214AC	<b>Manufacturers:</b> <a href="#">Electro-Films (EFI) / Vishay</a>	<a href="#">RFQ</a>
	<b>Part#:</b> <a href="#">SMA5J16-E3/61</a> <b>Description:</b> TVS DIODE 16V 28.8V DO214AC	<b>Manufacturers:</b> <a href="#">Electro-Films (EFI) / Vishay</a>	<a href="#">RFQ</a>
	<b>Part#:</b> <a href="#">SMA5J15CHE3/61</a> <b>Description:</b> TVS DIODE 15V 26.9V DO214AC	<b>Manufacturers:</b> <a href="#">Electro-Films (EFI) / Vishay</a>	<a href="#">RFQ</a>
	<b>Part#:</b> <a href="#">SMA5J16C-E3/61</a> <b>Description:</b> TVS DIODE 16V 28.8V DO214AC	<b>Manufacturers:</b> <a href="#">Electro-Films (EFI) / Vishay</a>	<a href="#">RFQ</a>

### Related keywords for SMA5J16A-E3/5A

<a href="#">Electro-Films (EFI) / Vishay SMA5J16A-E3/5A</a>	<a href="#">SMA5J16A-E3/5A distributor</a>	<a href="#">SMA5J16A-E3/5A supplier</a>	<a href="#">SMA5J16A-E3/5A price</a>
<a href="#">SMA5J16A-E3/5A download datasheet</a>	<a href="#">SMA5J16A-E3/5A datasheet</a>	<a href="#">SMA5J16A-E3/5A stock</a>	<a href="#">buy SMA5J16A-E3/5A</a>
<a href="#">Electro-Films (EFI) / Vishay SMA5J16A-E3/5A</a>	<a href="#">Electro-Films (EFI) / Vishay SMA5J16A-E3/5A</a>	<a href="#">Vishay Electro-Films SMA5J16A-E3/5A</a>	<a href="#">Phoenix Passive Components / Vishay SMA5J16A-E3/5A</a>